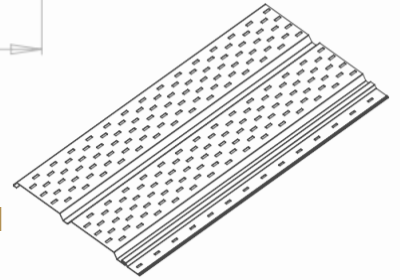
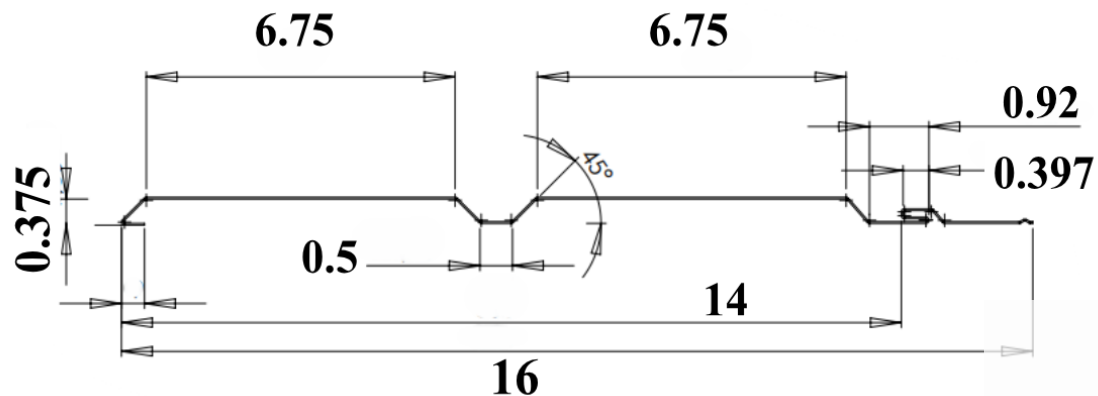


## 2 Panel Soffit Machine



### Product Overview

#### 2 Panel Profile 3/8" x 14" for .019 steel and .019-.032 aluminum coil

- **In-plant Production:** Powered by a 230v/460v electric motor
- **Hydraulic Drive:** Features a hydraulic exit end-shear
- **High-Quality Rollers:** Chrome plated for durability
- **Versatile Perforating:** Two independent drums offering four rollforming options
- **Advanced Controls:** Computerized system for batch processing and panel length
- **Runout Stand:** One 10' stand for smooth exit and product output
- **Decoiler:** Steel stand with two adjustable arbors
- **Optional Feature:** Protective film dispenser, 10' runout stands, available upon request

Za • Breze Machinery offers a comprehensive array of machines for metal roll forming and roofing accessory production.

